

```
//
var: false,

detailsCardOnHover = showOnHover(UserDetailsCard);

link = {

[Link],

Avatar,

profileName=(styles.container)->

onAvatar <& {
    userDetailsCardOnHover
    user=({user})
    delay=[CARD_HOVER_DELAY]
    wrapperClassName=(styles.avatarContainer)

<Avatar user={user} />
    userDetailsCardOnHover-

}

className=(classNames(
    styles.linkContainer,
    [line && styles.inlineContainer

    userDetailsCardOnHover user={user} delay=[CARD_HOVER_DELAY]-
    link
    {
        { pathname: buildUserUrl(user) }
        className=(classNames(styles.name, {
            [styles.alt]: type === 'alt',
            [styles.containerName]: secondaryLink,
            [styles.inLineLink]: inline,
        }))
    },
    {children || user.name}
    [Link]-

    secondaryLink
    ? null
    : <a
        href={secondaryLink.href}
        className=(classNames(styles.name, {
            [styles.alt]: type === 'alt',
            [styles.secondaryLink]: secondaryLink,
        }))
    )
    {secondaryLink.Label}
    />-
    userDetailsCardOnHover-
```

```

143         >
144         Instagram
145     </a>
146 </li>
147 </ul>
148 </div>
149
150     });
151 }
152
153 renderWhatToShowLinks() {
154     return (
155         <div className={styles}
156         <className={styles}
157         <ul className={styles}
158         {this.renderWhatToShowLinks()}
159         {this.renderWhatToShowLinks()}
160         {this.renderWhatToShowLinks()}
161         {this.renderWhatToShowLinks()}
162         {this.renderWhatToShowLinks()}
163         {this.renderWhatToShowLinks()}
164         {this.renderWhatToShowLinks()}
165         </ul>
166     </div>
167 );
168 }
169
170 renderWhatToShowLinks(title, url) {
171     return (
172         <li className={styles.footer}
173         <a
174         href={trackUrl(url)}
175         target="_blank"
176         rel="noopener noreferrer"
177         >
178             {title}
179         </a>
180     </li>
181 );
182 }
183
184 renderFooterSub() {
185     return (
186         <div className={styles.footerSub}
187         <link item="" title="Home - Unsplash"
188         <icon
189         type="image"
190         className={styles.footerSubLogo}
191         />
192         </Link>
193         <span className={styles.footerSlogan}
194         </div>
195 );
196 }
197
198 render() {
199     return (
200         <Footer className={styles.footerGlobal}
201         <div className="container"
202         {this.renderFooterMain()}
203         {this.renderFooterSub()}
204     </div>
205 );

```

## BryteFlow for



## Completely automated SAP Data Replication in real-time.

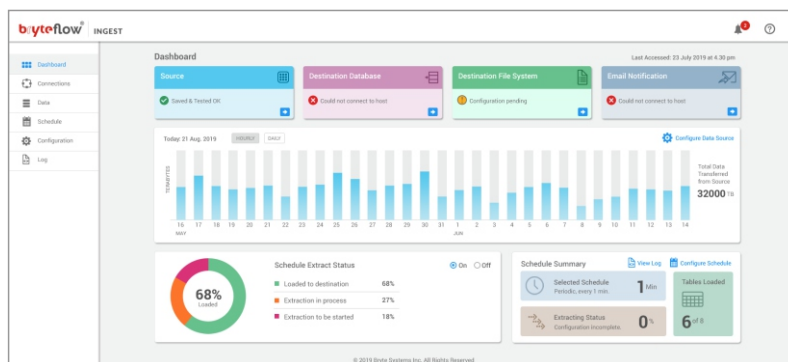
The codeless, super-fast way to get your SAP data to Amazon S3, Redshift and Snowflake, Azure Synapse & SQL Server.

## KEY FEATURES

- Zero impact on SAP sources
- Remodeling data
- Typecasting
- Near real-time replication
- Click-to-extract
- Catch-up from network dropout
- Masking and tokenization
- Time-scale history
- Reconciliation dashboard
- Replication of complex data and data models
- Support for Pool and Cluster Tables
- No need to change SAP installation
- Partition tables

## BENEFITS

- Guaranteed usable data
- High availability and reduced risk
- Secure data
- Retain more raw/historic data at a lower cost
- High concurrency
- Liberate and leverage SAP data
- Complex made simple
- Organize data analytically



BryteFlow Ingest, BryteFlow's Data Replication tool

## Liberate your SAP data

BryteFlow for SAP eliminates barriers to analyzing data from SAP by liberating transaction data into a cost-effective and scalable data lakes on the cloud. This enables the concurrency of queries from a wider community of users and increases the value of SAP data.

## Data Transformation Capability

Once SAP data is ingested, this can automatically trigger ETL jobs, which can be written in SQL by non-technical analysts via the BryteFlow graphical editor. SAP data is now open and extensible to the world of your cloud data warehouse/data lake as well as AI/ML technologies.

## Log based CDC replication with full transaction history

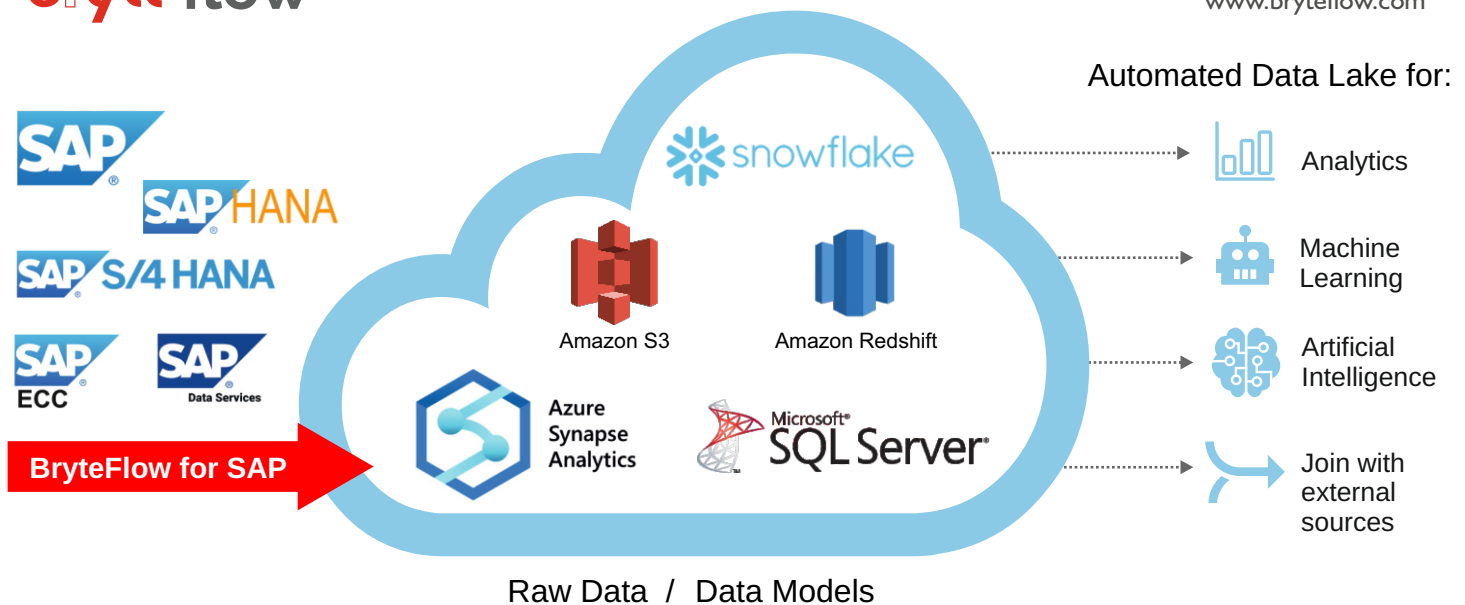
BryteFlow is the bridge between these legacy systems and the modern digital architectures. BryteFlow uses a proven log-based approach to data extraction from these legacy databases in near realtime with full transaction history including SAP 'deletes'.

## Selective Extraction from SAP

Select columns and/or use a where clause along with log based CDC to limit rows that are ingested to your cloud data warehouse / data lake.

## Handles very large SAP tables with high throughput

With cutting edge Large Table Partitioning mechanisms, BryteFlow is able to optimally ingest very large SAP tables with high throughput. The ingested data has high fidelity because BryteFlow also reconciles data between source and destination as well as maintaining the relationships between tables.



### Understandable and usable SAP data in your data lake

Analysts can extract data from a full range of SAP Modules. Analytic data assets can be easily created from the SAP source object. During the extraction process, data formats are converted on the fly, for example dates stored in character and decimal formats are converted to correct date formats. Data types like GUID are converted effortlessly.

### Click-to-access SAP data

Quickly get started on big data initiatives without the need to change current SAP installation. Analysts can self-serve and fast-track their data workflow by using a point-and-click interface to granularly select the required SAP tables for blending with non-SAP data.

### Zero impact on SAP source

Typically SAP tables are very large, in the Terabytes range, BryteFlow for SAP can replicate large tables with zero-impact on source systems by partitioning the tables.

### Remodeling data to make it consumable

BryteFlow for SAP can replicate complex data and data modules by remodeling the data into analytical data formats. This makes the data usable outside of an SAP environment.

### Near real-time replication

With frequent incremental extractions, compression and parallel streams, data is constantly kept up-to-date and available to enable real-time analytics.

### SQL workbench to blend data sources

An easy to use drag-and-drop workbench delivers a codeless development environment to build complex SQL jobs and dependencies across SAP and non-SAP data.

### Automatic catch-up from network dropout

In the event of a system outage or lost connectivity, BryteFlow for SAP has a catch-up mode. This can identify when the interruption occurred and reprocess the changes. A diagnostic capability can also understand when a connection is lost and automatically attempts to restore connectivity.

### Time-scale history

BryteFlow for SAP provides out-of-the-box options to maintain the full history of every transaction from SAP to the destination.

### Monitoring dashboard

BryteFlow for SAP displays various dashboards and statistics to stay informed on the extraction process as well as reconciling differences between source and target data.

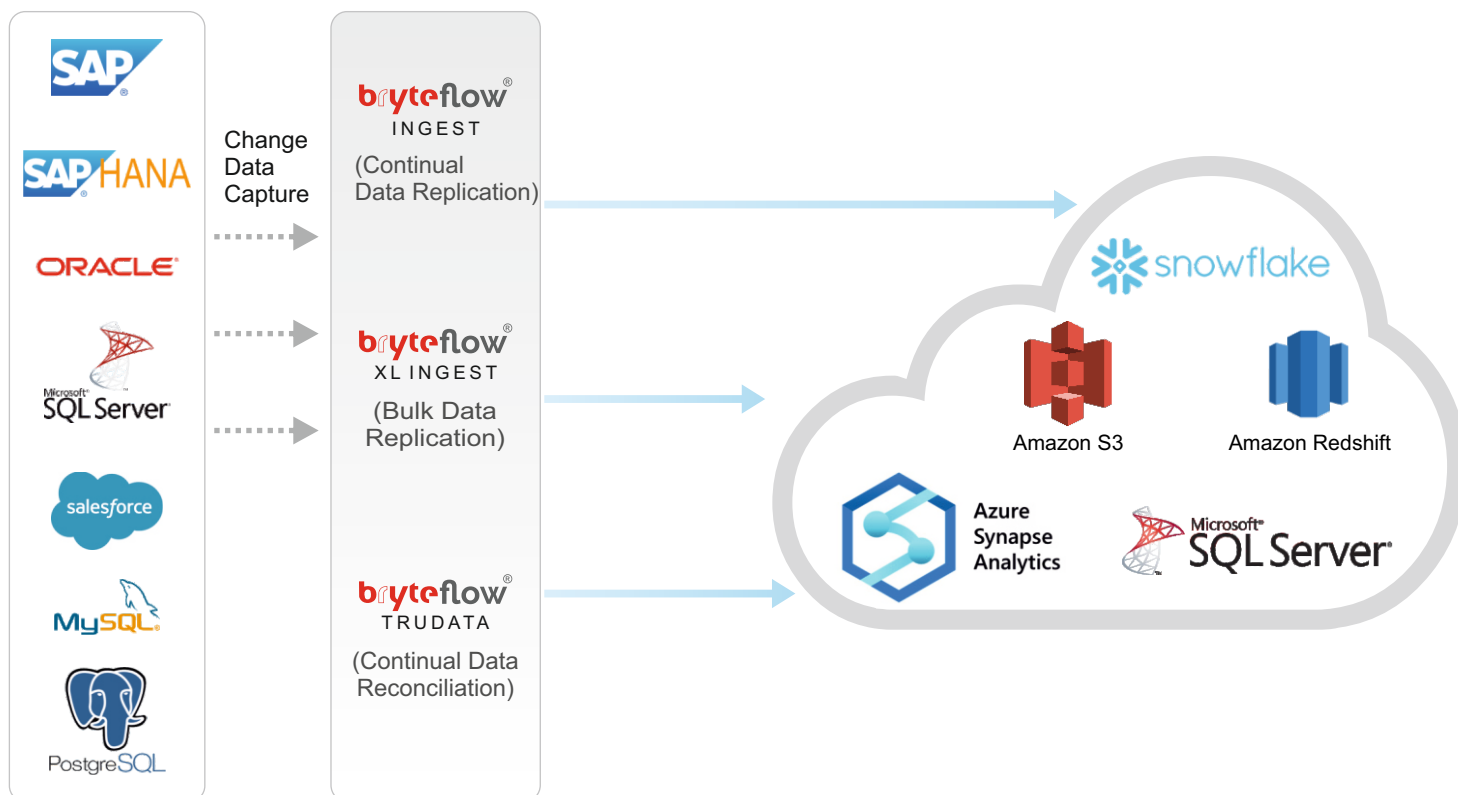
### Masking and tokenization

BryteFlow for SAP provides enterprise grade security to mask, tokenize or exclude sensitive data from the data extraction process.

### Metadata Management

With Bryteflow, users can leverage a point and click interface to search and explore data sets. Bryteflow automatically tags key data attributes and structures into a data catalogue that can be accessed directly by end users or third party tools / applications.

## Automated SAP Data Replication and Reconciliation



## The BryteFlow Suite

### BryteFlow Ingest & XL Ingest

BryteFlow Ingest & XL Ingest are for real-time, fast replication of data. XL Ingest handles especially large datasets over 50 GB.

### BryteFlow Blend

BryteFlow Blend lets you remodel, merge, transform any data to prepare data models for Analytics, AI and ML.

### BryteFlowTruData

BryteFlowTruData is the data reconciliation tool that verifies your data for completeness constantly so you can be sure no data is missing.

### BryteFlow Dashboard

BryteFlow Dashboard gives a high level view across all BryteFlow Ingest instances, with data latencies and data concurrency available at a glance.



## About Us

At Bryte Systems we believe your data should deliver immediate business value. We provide enterprise software to build Cloud Data Lakes and Analytics environments to some of the biggest names in business including Under Armour, Origin Energy, Horizon Power, Citic Pacific Mining, ANZ Bank, Vocus Communications, Woodside Energy, Waterford and more.

We believe BrtyeFlow software is a smarter, more cost-effective alternative to the typical cloud data warehouse. Our mission is to take the pain out of data and enable it to add incredible value to your business. With BryteFlow you can replicate and prepare data for analytical and business insights in almost real-time across AI, ML, analytics and other hybrid environments.

## CLIENTS



\*A Partial Client List

**GET A FREE TRIAL**

## Try BryteFlow free with extended support

We offer extended support for our free trial. We will guide you at every step with screen sharing, full online support and consultation so do try out BryteFlow.

**Get the BryteFlow Free Trial**

**bryteflow** <sup>®</sup> **Data to Dashboard in minutes!**

B R Y T E F L O W . C O M