

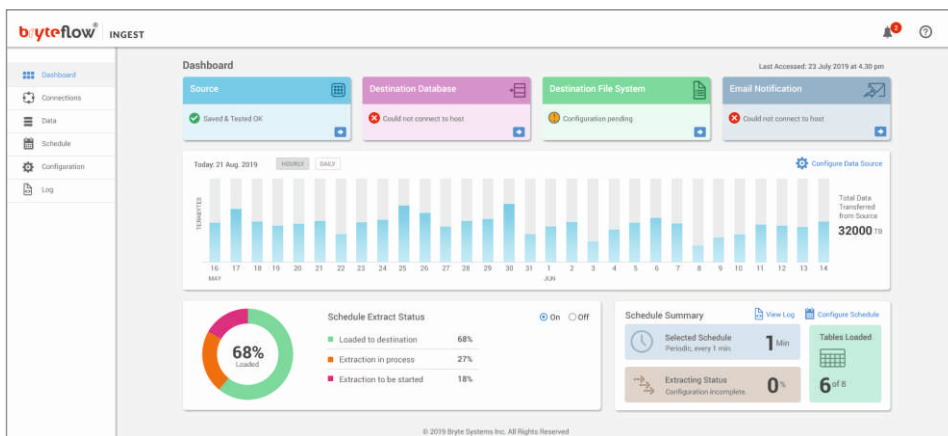


BryteFlow for



**Completely automated,  
self-service and real-time.**

The codeless, super-fast way to get your  
SQL Server data to Amazon S3, Redshift  
and Snowflake.



BryteFlow Ingest, BryteFlow's Data Replication tool

With BryteFlow, you can extract data from a full range of SQL Server Editions, including Standard and Enterprise and all versions from SQL Server 2008 with just a few clicks. The software provides automated merging deltas capability to ensure your SQL Server data is ready for analytical consumption. Further, BryteFlow enables configuration of custom business logic to consolidate SQL Server data from multiple applications or modules into AI and Machine Learning ready inputs.

## KEY FEATURES

- Zero source impact
- Change Tracking capability
- Real time data replication
- Click-to-extract interface
- Automated outage recovery
- Data masking and encryption
- Flexible deployment options
- Historical data retention
- Automated data monitoring and reconciliation

## BENEFITS

- Faster time to insight & action
- Low cost data storage
- Improved application performance
- Lower ETL footprint

## Zero Impact at Source with Change Tracking

BryteFlow eliminates the need for costly database queries, triggers, new tables to store tracking information, and custom cleanup processes or extensive logging to extract data. It syncs data by using log based change data capture and applies these changes to S3 and/or Redshift and does not require any additional agents or software to be installed.

## Built on industry standards

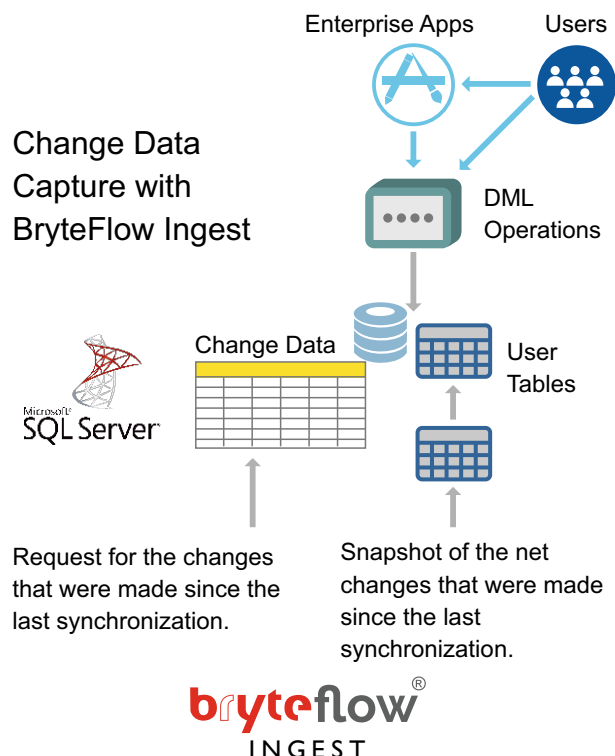
BryteFlow is future-proof and compatible with upgrades to SQL Server 2008 and above or SQL Server on Amazon RDS.

## Automatic catch-up from network dropout

In the event of a network error or outage, BryteFlow backtracks its last successful load and automatically resumes operations once connectivity is re-established. The software also features a high performance catchup mode, designed to rapidly bring systems back into sync.

## Continuous data sync

Incremental extraction removes the need for resource intensive batch extraction which frees up valuable processing time and limits the risk of large bulk data uploading failures. It also ensures that analysts and data scientists have access to current and up to date data.



## Metadata Management

BryteFlow has inbuilt Metadata and Data Lineage capability. It also integrates natively with AWS Glue Data Catalog and AWS Lake Formation for a seamless integration into the AWS ecosystem.

## Ingest Petabytes of Data

BryteFlow uses smart algorithms for getting petabytes of data from SQL Server to the destination of choice.

## Historical data retention

BryteFlow provides out-of-the-box options to maintain full record history by using an industry standard type-2 approach. This tracks historical data by creating multiple records for a given natural key in the dimensional tables with separate surrogate keys and version numbers.

## Masking and Encryption

BryteFlow enforces data encryption in transit and rest, and enables selected fields to be excluded from Data Extraction processes.

## Flexible deployment options

BryteFlow software features flexible deployment options. It can be deployed on EC2 instance or on premise behind the organization's firewall / proxies.

## Click to Extract

BryteFlow's click-based user interface delivers a codeless development environment to configure and monitor data streams – eliminating time spent managing complex ETL jobs.

## Monitoring and Alerting

BryteFlow features an advanced data monitoring console which performs continuous data health checks and reconciliations. Users are automatically alerted and notified in the event of any system errors, and this totally customizable by the users.

## Advanced analytics-ready

BryteFlow can be configured with custom business logic to provide cleansed, modelled and analytics-ready data.

It also features out of the box integrations with Hadoop / Spark on Amazon EMR, AI with Amazon Machine Learning and powerful Data Warehousing with Amazon Redshift and Snowflake. With BryteFlow, data scientists can access and analyse data on-demand, using any technology or tool of their preference.

## Partitioning

BryteFlow is built to effectively extract large application tables using partitioning algorithms. This process breaks up large tables into multiple sections for an effective multi-part upload.

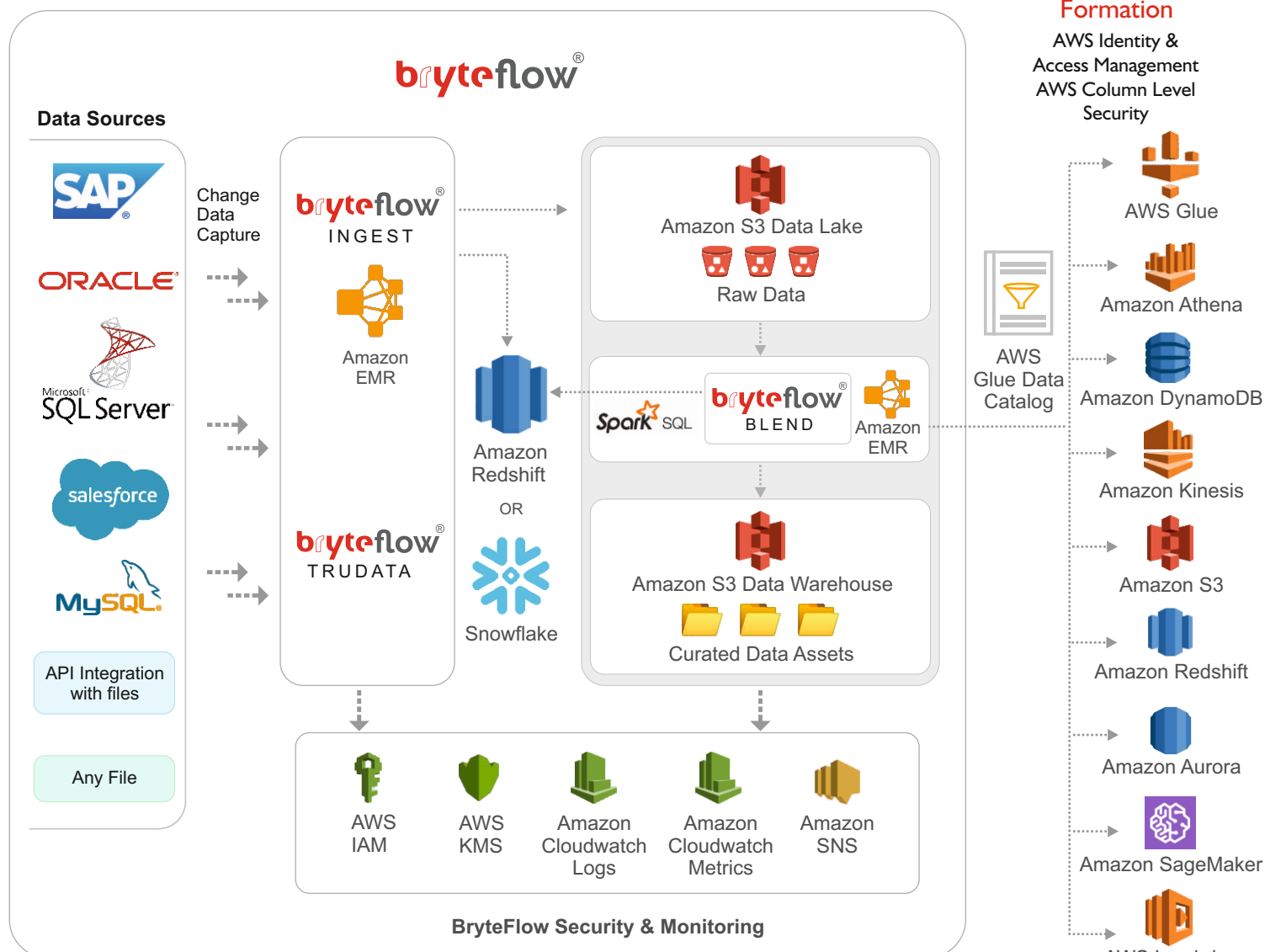
## Low cost data storage

BryteFlow is designed to land data into low cost Amazon Web Services Infrastructure on either Amazon S3 or Amazon Redshift or Snowflake. With Amazon S3 Object Storage, clients can store their data for just 1 – 3 cents per GB per month.

## Built-in AWS Best Practices & Optimizations

BryteFlow automates all core AWS best practices for data ingestion, storage and access. This includes Amazon KMS Encryption, Amazon S3 File Management / Naming Conventions, Sort and Dist Keys, S3FS integrations with EMR, Multi-part and parallel data uploads.

BryteFlow integrates seamlessly with AWS services to provide fast, real-time data integration



## The BryteFlow Suite

### BryteFlow Ingest & XL Ingest

BryteFlow Ingest & XL Ingest are for real-time, fast replication of data. XL Ingest handles especially large datasets over 50 GB.

### BryteFlow Blend

BryteFlow Blend lets you remodel, merge, transform any data to prepare data models for Analytics, AI and ML.

### BryteFlowTruData

BryteFlowTruData is the data reconciliation tool that verifies your data for completeness constantly so you can be sure no data is missing.

### BryteFlow Dashboard

BryteFlow Dashboard gives a high level view across all BryteFlow Ingest instances, with data latencies and data concurrency available at a glance.



## About Us

At Bryte Systems we believe your data should deliver immediate business value. We provide enterprise software to build Cloud Data Lakes and Analytics environments to some of the biggest names in US and Australian business including Under Armour, Origin Energy, Citic Pacific Mining, ANZ Bank, Vocus Communications, Woodside Energy, Waterford and more.

We believe BrtyeFlow software for AWS and Snowflake is a smarter, more cost-effective alternative to the typical cloud data warehouse. Our mission is to take the pain out of data and enable it to add incredible value to your business. With BryteFlow you can replicate and prepare data for analytical and business insights in almost real- time across AI, ML, analytics and other hybrid environments.

## CLIENTS



\*A Partial Client List

**GET A FREE TRIAL**

**We have FREE Trials of our products on AWS Marketplace**

**Get a FREE Trial of the BryteFlow Standard Edition**  
(Includes BryteFlow Ingest)

**Get a FREE Trial of the BryteFlow Enterprise Edition**  
(Includes BryteFlow Ingest, BryteFlow Blend & BryteFlow TruData)

**bryteflow® Data to Dashboard in minutes!**

**B R Y T E F L O W . C O M**